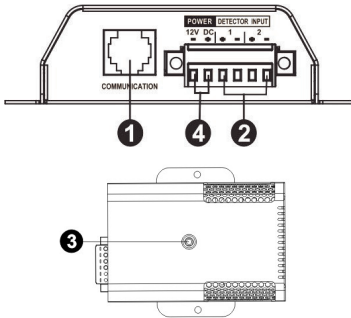




USER GUIDE
ENVIROMONITOR
TEMPERATURE & HUMIDITY SENSOR

bxterra.com

PRODUCT OVERVIEW



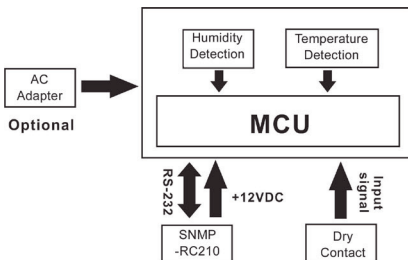
1. Communication port
2. Input dry contact terminal
3. Device status indicator
4. DC input connector

PRODUCT INTRODUCTION

This ENVIROMONITOR is a connectivity device to remotely monitor temperature and humidity via the bXterra SNMP-RC210. It also provides two dry contacts to receive signals from up to two compatible devices, such as a security system and alarm system.

- Plug & play for simple installation with the SNMP-RC210
- Monitor temperature and humidity to protect equipment
- Allow two contact closure signals for user-defined usage
- PowerFrame™ Business software to remotely monitor temperature and humidity status via web browser
- Measure temperatures between 32 to 212°F with an accuracy of $\pm 1.5^\circ\text{F}$
- Measure relative humidity between 10 to 90% RH with an accuracy of $\pm 3\%$

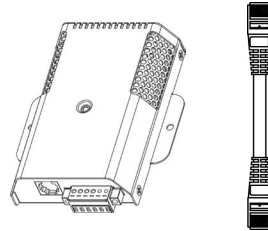
FUNCTION DIAGRAM



INSTALLATION

Inspection

Before installation, please inspect the unit. Be sure that nothing inside the package is damaged. You will find the following items inside the package:



- ENVIROMONITOR
- 10-foot cable

Pre-installation

Before connecting the ENVIROMONITOR, make sure the SNMP-RC210 has already been installed. Please make sure the SNMP-RC210 card has been installed correctly.

Wall-mounting

Step 1: Mark a 3.2 in. vertical line for reference and mark the two ends of the line on the wall

Step 2: Drill two holes

Step 3: Mount the unit by positioning the key-hole slots over the mounting holes and secure the ENVIROMONITOR to the wall using 2 x M3 screws (see Image 1).

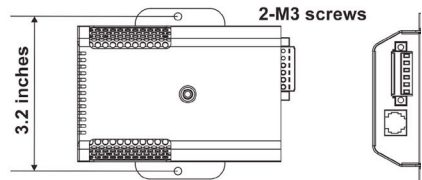


Image 1

Connect to Power

Please follow Image 2 to connect an external 12VDC power source. If connecting the ENVIROMONITOR to a SNMP-RC210, power is provided by the SNMP-RC210 card. There is no need to connect an external power source.

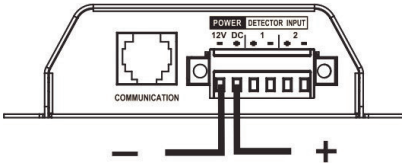


Image 2

NOTE: To guarantee the ENVIROMONITOR operates safely, please use the appropriate DC wire with UL2468 #24AWG spec.

SNMP-RC210 Connection

Connect the supplied network cable from the communication port of the ENVIROMONITOR to the RS-232 port of the SNMP-RC210. Use another network cable to connect from the RJ45 port of the SNMP-RC210 to LAN. (Refer to Image 3)

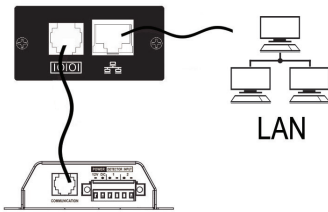


Image 3

NOTE: If the supplied network cable is not long enough for your application, you may substitute another longer cable (do not exceed 50 feet). After making the connection, a green LED will light up and the unit will start to operate.

Software Installation

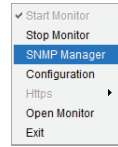
After the unit is connected, please follow the steps below to install PowerFrame Business monitoring software from the internet.

1. Go to bxterra.com/downloads
2. Click PowerFrame Business software to download the software
3. Follow the on-screen instructions to install the software
4. When your computer restarts, the monitoring software will appear as a shortcut on your desktop and in the system tray, near the clock

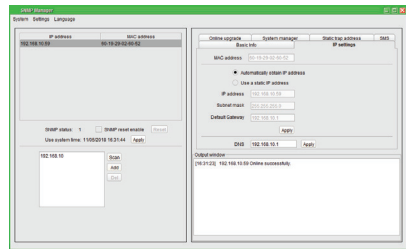
Step 1:
Double click the “PowerFrame” icon to launch the software.



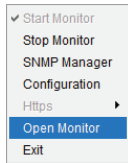
Step 2:
PowerFrame Business will be automatically activated. Select “SNMP Manager” by right-clicking PowerFrame Business icon in the task tray.



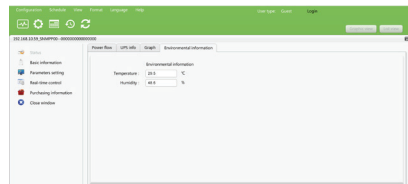
Step 3:
The SNMP Manager will automatically search the local network for bXterra SNMP-RC210 cards and display the list of results in the top-left of the SNMP Manager window.



Step 4:
After the SNMP-RC210 card is successfully detected, select “Open Monitor” by right-clicking the PowerFrame Business icon in the task tray.



Step 5:
When launching the PowerFrame Business software, click the “Environmental information” tab to view the status of your UPS.



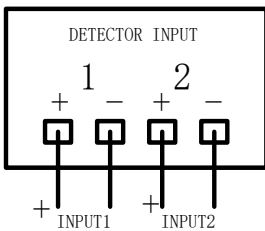
TROUBLESHOOTING

PROBLEM	POSSIBLE CAUSE	SOLUTIONS
The PowerFrame Business software displays "0" in the environmental information section	The SNMP-RC210 card is not connected properly	Make sure the SNMP-RC210 card is firmly connected inside the UPS
	The network cable or DC input connection is not connected properly	
The LED is not lit or the LED is flashing	Input power is not stable	Check if the DC input is connected firmly. If the problem persists, please contact bXterra Tech Support.
The temperature or humidity accuracy is out of range	The temperature or humidity sensor is broken	Please contact bXterra Tech Support.

TECHNICAL SPECIFICATIONS

MODEL	ENVIROMONITOR
Nominal DC input	12VDC
DC input current	0.5 A min.
Temperature measurement range	32 ~ 212°F
Temperature measurement accuracy	±2.7°F
Humidity measurement range	10% ~ 90% RH
Humidity measurement accuracy	±3%
Communication	RS232 with ASCII protocol
Acceptable cable length	50 ft
Dimension (D x W x H) (in)	4.5 x 3.5 x 1
Net weight (lbs)	0.5

INPUT DRY CONTACT TERMINAL



Input signal specification

Input Voltage	Maximum	Minimum
	12V	5V

© 2018 Bxterra Power Technology, a subsidiary and trademark of APX Power Technology LLC, USA. All Rights Reserved. bXterra and the bXterra logo are trademarks of APX Power Technology LLC, USA. All other trademarks are property of their respective owners. Imagery and specifications may differ from actual products and are subject to change without notice.